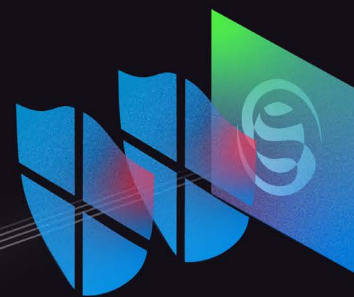


# Preventing Ransomware And Advanced Threats

*Achieve enhanced defense-in-depth with Morphisec AMTD + Microsoft Defender for Endpoint*



Ransomware attacks continue to escalate in frequency, sophistication, and post-breach damages. In 2023, ransomware payments **crossed USD\$1 billion** – an all-time high. Threat actors are increasingly using evasive techniques to deploy ransomware and other threats, which can bypass the protection provided by endpoint protection solutions.

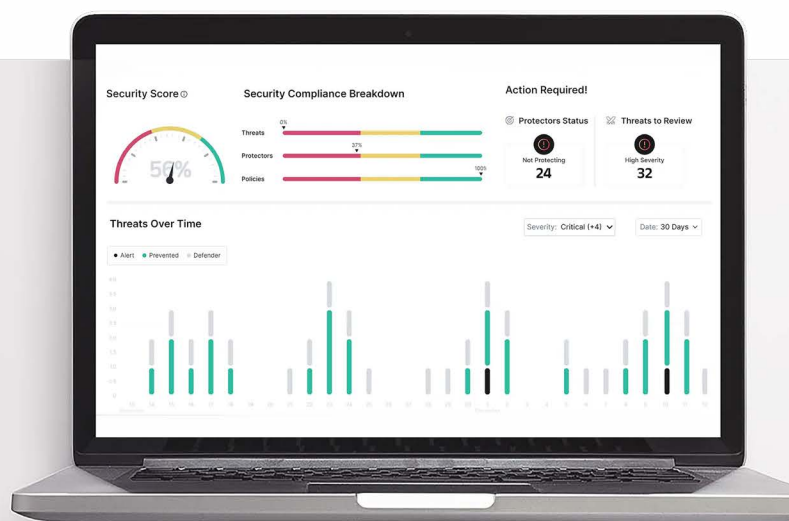
Microsoft Defender for Endpoint detects and responds to cyber threats with recognizable signatures, behavioral patterns and Indicators of Attacks (IOAs). With Microsoft Defender's rising market share, threat actors will ensure payloads delivered to targets will include evasive techniques capable of and tested to bypass this solution.

Like all endpoint protection solutions, Microsoft Defender for Endpoint cannot stop what it cannot detect. Gaps exist due to:

- Reliance on reactive threat classification, using known signatures and Indicators of Attacks (IOAs).
- Dependence on cloud-based connectivity for updated threat intel.
- A lack of in-memory protection, making it prone to EDR evasion techniques.
- Insufficient **legacy OS protection** due to reliance on Microsoft Defender AV for threat visibility and telemetry, and other OS architectural capabilities such as AMSI and ETW.
- Skills required, including costly and time-consuming analysis of security alerts for incident response.

## Achieve Defense-in-Depth and Anti-Ransomware Assurance

The rise of these targeted and evasive threats means that no single security solution can be relied upon to stop attacks. Instead, security teams must establish a multi-layered security obstacle course between critical assets and potential threats. Morphisec, a member of **Microsoft Intelligent Security Association (MISA)**, brings Defense-in-Depth and an additional layer of protection to Microsoft Defender for Endpoint users.



# Better Together: Morphisec AMTD + Microsoft Defender for Endpoint

Morphisec Automated Moving Target Defense (AMTD) seamlessly integrates with Microsoft Defender for Endpoint, closing its runtime memory security gap with a deterministic, prevention-first approach to stop threats. AMTD does this by morphing – randomizing – the runtime memory environment and other system resources, creating an unpredictable attack surface.

Morphisec's Anti-Ransomware Assurance is proven to stop 95%+ of ransomware by providing distinct layers of anti-ransomware protection, pre-emptively reducing an organization's exposure. It proactively prevents attacks at multiple phases, from early infiltration attempts, to protecting critical system resources and data when ransomware attempts to execute.



## Adaptive Exposure Management

Prioritize vulnerabilities, automate the assessment of your security controls, identify high-risk software and address security misconfigurations.



## Infiltration Protection

Prevent the execution of ransomware attacks at early infiltration stages; a constantly shifting attack surface makes it harder for attackers to exploit vulnerabilities.



## Impact Protection

Proactively defend critical assets and files with a prevention-first strategy, minimizing recovery times and strengthening your anti-ransomware stance.

Adaptive Exposure Management

Infiltration protection

Impact protection

Make the most of your Microsoft investment and close critical security gaps – download the complete white paper to learn how:

[Download The White Paper](#)



Microsoft Security

Fortify Your Endpoint with Morphisec  
The Missing Layer in Microsoft Defender's Ransomware Defense

[Download Now](#)



## Ready to get started?

Find us on the [Microsoft Commercial Marketplace](#)

Visit our website <https://morphisec.com>

Schedule a demo <https://www.morphisec.com/schedule>

## About Morphisec

Founded in 2014, Morphisec, a pioneer in blast radius resiliency, keeps your business safe by intelligently anticipating and neutralizing threats - minimizing the impact and blast radius of cyber incidents and ensuring uninterrupted business operations without the need for constant tech team intervention or impact to performance.

Powered by Automated Moving Target Defense (AMTD) technology, the next evolution of cybersecurity, Morphisec protects over 7,000 organizations across nine million Windows and Linux endpoints, servers and workloads. Morphisec stops thousands of advanced attacks daily at Lenovo/Motorola, TruGreen, Cipla, Citizens Medical Center, and many more. Learn more at [www.morphisec.com](http://www.morphisec.com)