

How Ransomware Bypasses Your Security Stack

Your security is NOT bulletproof

Modern ransomware doesn't 'break through' your defenses. It slips past them by abusing trusted tools, misconfigurations, blind spots, and leveraging AI-driven tactics to adapt, evade, and exploit vulnerabilities that your security stack was never designed to see.

Common Entry Points

- Misconfigured settings
- Vulnerable software
- Phishing / social engineering
- Unsecured cloud resources



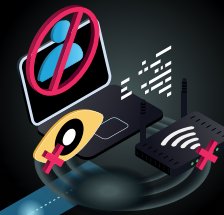
Persistence Tactics

- Misused remote access tools
- Malicious script injection
- Multiple backdoors for re-entry



Evasion Techniques

- Unmanaged devices
- Shadow IT risks
- Outdated and unsupported systems



Where Defenders Are Blind

- Encrypting at boot time
- Hiding security logs
- Custom evasive malware
- Misusing trusted tools



Attackers move fast. Automated Moving Target Defense moves faster.
CTO Ransomware Deep-Dive

[View On Demand](#)